



SHREE EXTRUSIONS LIMITED

Quality, Technology & Vision at it's Best

WORLD CLASS SOURCING SOLUTIONS FOR BRASS & BRONZE COMPONENTS



An ISO 9001-2008 Certified Company

Laboratory Accredited By NABL



**Precision Turned - Forged - Machined Components In Brass & Bronze Material
Complying With All International Standards And Specification**



**NABL / ISO : 17025
Accreditation Number T - 1719/1720**





SHREE EXTRUSIONS LIMITED

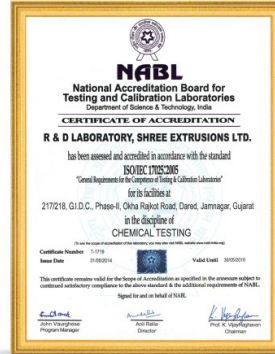
About us :

QUALITY, TECHNOLOGY & VISION AT IT'S BEST

Shree Extrusions Ltd. With a production capacity of 6000 MT per annum sprawls across an area of 100000 Sq. Ft. With unique design of constructed area of 70000 sq ft. with well equipped machinery for Process, Quality Control & Utility which maximizes productivity it enables us to transfer benefits of the large scale operations to the customers in order to consistently manufacture international quality products. The company has employed a dedicated team of highly qualified and experienced engineers and management professionals.

QUALITY

Shree Extrusions Ltd. Is an ISO 9001: 2000 certified company with NABL Accreditation Lab as Per ISO / IEC 17025: 2005, T-1719 & T- 1720. Our Product are as per ROHS and REACH compliance with sophisticated quality control equipment & quality assurance systems using modern latest equipments like spectrometer , Eddy current testing metallurgical Microscope, Impact Testing conductivity Meters, Mercurous Nitrate Test, Profile Projector, LPT Test, Computerized UTM etc. Our R & D team is continuously upgrading the system and equipment to enhance capabilities towards best Quality Management System to serve our clients in best way.



ISO/IEC17025:2005
Accreditation Number T-1719



ISO/IEC17025:2005
Accreditation Number T-1720

**THE FIRST COMPANY IN BRASS & BRONZES
TO BE NABL ACCREDITED
FOR CHEMICAL & MECHANICAL TESTING IN INDIA**

Product Portfolio

We specialize in manufacturing, exporting and supplying a series of Brass and Bronze Cupro Nickel alloys products that are listed below:

Bronze Components :

- Bronze Bushing
- Bronze Bolts
- Bronze Screw
- Bronze Electrical Connectors (Split Bolt)
- Bronze Valve Parts – Sleeve, Rings, Spindle, Shaft, Plate, Seals etc.
- Bronze Nuts
- Bronze Washers
- Bronze Casting products

Bronze Material/Grades Available :

- Aluminum Bronze
- Bronze
- Nickel Aluminum Bronze
- Manganese Bronze
- Tin Bronze
- Aluminum Silicon
- Silicon Bronze
- Phosphorous Bronze
- Lead Commercial Bronze

Brass Components :

- Brass Fasteners
- Brass Plumbing parts
- Brass Electrical Parts
- Special Turned Components
- Brass Electrical Connectors (Split Bolts)
- Brass Valve Parts – Sleeve, Rings, Spindle, Shaft, Plate, Seals etc.
- Brass Bath fittings
- Brass Bushing
- Brass synchronizer Rings
- Forged Components

Brass Material / Grades Available :

- Leaded Brass :**
 - Free Cutting Brass
 - Riveting Brass
- Lead Free Brass :**
 - 70/30 Brass
 - 60/40 Brass
 - DZR / ECO Brass
 - Forging Brass
 - Nickel Silver
 - High Tensile Brass
 - 65/35 Brass
 - Red Brass
 - 63/37 Brass
 - Naval Brass

Cupro Nickel :

- 70/30 Copper Nickel
- CuNi6
- 90/10 Copper Nickel
- CuNi11
- 95/5 Copper Nickel
- CuNi2.2
- Antimicrobial

TYPES / FINISH

- EXTRUDED
- CASTED
- FORGED
- MACHINED
- TURNED
- PLATED

SHAPES

- Ingots
- Rods
- Hex
- Square
- Profiles
- Parts
- Billets
- Wire
- Tubes
- Flat
- Hollows

CERTIFIED OR REGISTERED WITH

- Hindustan Aeronautics Ltd. - Nasik
- Garden Reach Shipbuilders & Engineers Limited, Calcutta
- Material Organization Mumbai, Vishakhapatnam, Khamaria
- Hindustan Shipyard Ltd., Vishakhapatnam
- Gun Carriage Factory, Jabalpur
- Ordinance Factory, Katni / Khamaria / Dumdum
- Mazagon Dock Limited, Mumbai
- Naval Dockyard, Mumbai
- Ship Building Centre, Vishakhapatnam
- Bharat Heavy Electricals Ltd.
- Gun & Shell Factory, Cossipore
- Metal & Steel Factory, Kolkata



Quality Control / R & D

Optical Emission Spectrometer



Impact Testing Machine



Chemical Laboratory



Universal Testing Machine



Hardness Testing Machine



Microscope Grain Tester



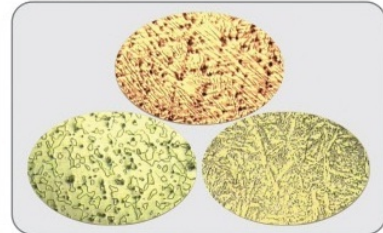
Eddy Current Testing Machine



Liquid Penetration Test



Grain Structure



PROCESS EQUIPMENTS

- Induction Furnaces
- Oil Fired Furnaces
- Hydraulic Extrusion Press
- Annealing Furnaces
- Inverted Heavy Wire Drawing Machine
- Tandem Wire Drawing Machine
- Multi Die Wire Drawing Machine
- Single Drum Wire Drawing Machine
- PLC Control Rod Drawing Machine
- Straightening Cutting & Rilling Line
- Flattening Mill
- Chamfering & Inspection Line

QUALITY CONTROL EQUIPMENTS

- Spectrometer of Spark emission Technology (ROHS Compliance (SWITZERLAND))
- Eddy Current Testing Machine (GERMAN)
- Metallurgical Microscope With CCTV attachment (JAPAN) Hardness Tester
- Impact Testing Machine
- Conductivity Meters
- Ultrasonic Testing Machine
- Mercurous Nitrate Test
- Profile Projector
- Liquid Penetration Test
- Computerized Ultimate Tensile Measurement Tester
- Hardness Tester (Heavy)
- Micro Hardness Tester

UTILITY

- Diesel Generators
- High Pressure Air Compressors
- Pickling Tanks
- Stretch Wrapping Machine for Quality Packing
- PLC Based RO Plant for Industrial Water Supply
- Cooling Towers
- EOT Cranes
- Hydraulic Loader Dock
- Stores
- Lathe/Grinding/Shaper Machine
- Die Room for TC Extrusion / Draw Die
- Diamond Die Polishing / Recondition Unit
- Maintenance



Processing Capabilities

CNC



13 mm Automatic Turning, Drilling, Threading Machines



TMC



P-0 Sliding Head Automatic Machines



VMC



4 in 1 Rotary Table SPM (for 2nd Operation)



Hydraulic Forging



Calibration Instruments



Tools Storage



PROCESS EQUIPMENTS

- 13 mm Automatic Turning, Drilling, Threading Machines
- 1/2" mm Automatic Turning, Drilling, Threading Machines
- 3/4" mm Automatic Turning, Drilling, Threading Machines
- P-3 Sliding Head Automatic Machines for Turning, Drilling, Threading – Upto 3 mm
- P-7 Sliding Head Automatic Machines for Turning, Drilling, Threading – Upto 7 mm
- P-10 Sliding Head Automatic Machines for Turning, Drilling, Threading – Upto 10 mm
- 4 in 1 Rotary Table SPM (for 2nd Operation)
- Lath Machines – Conventional
- Various Hand Operated Machines
- CNC Machine – DX200, DX150, DX150
- VMC – 650 & 850
- HMC
- TMC
- EDM Wire Cut
- Hydraulic Forging Press 150 Tons and 100 Tons
- Screw Forging Press
- Power Press 10 Tons
- Etching Machine

QUALITY CONTROL EQUIPMENTS

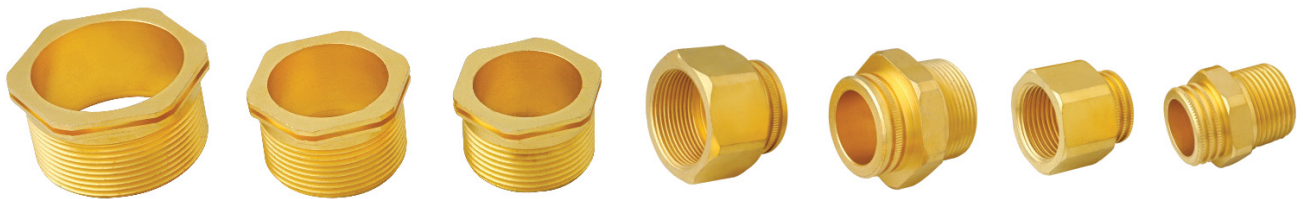
- Profile Projector
- Jet Air Testing Machine
- Slip Gauge
- Measure Pin – 0.5 mm to 6 mm
- Thread Comparison Gauge Set
- Philor Gauge Set
- Torque Testing
- Ring & Thread Gauges for Various Threads
- WCP Gauge for Calibration for Thread Gauges
- Micrometers – Various
- Vernier – Various
- Bore Gauge
- Height Gauge
- Surface Plate
- Liquid Penetration Test Kit
- And various other machines.

We can maintain accuracy in +/-10 Micron to +/-25 Micron.



SHREE EXTRUSIONS LIMITED

Plastic Moldings Inserts

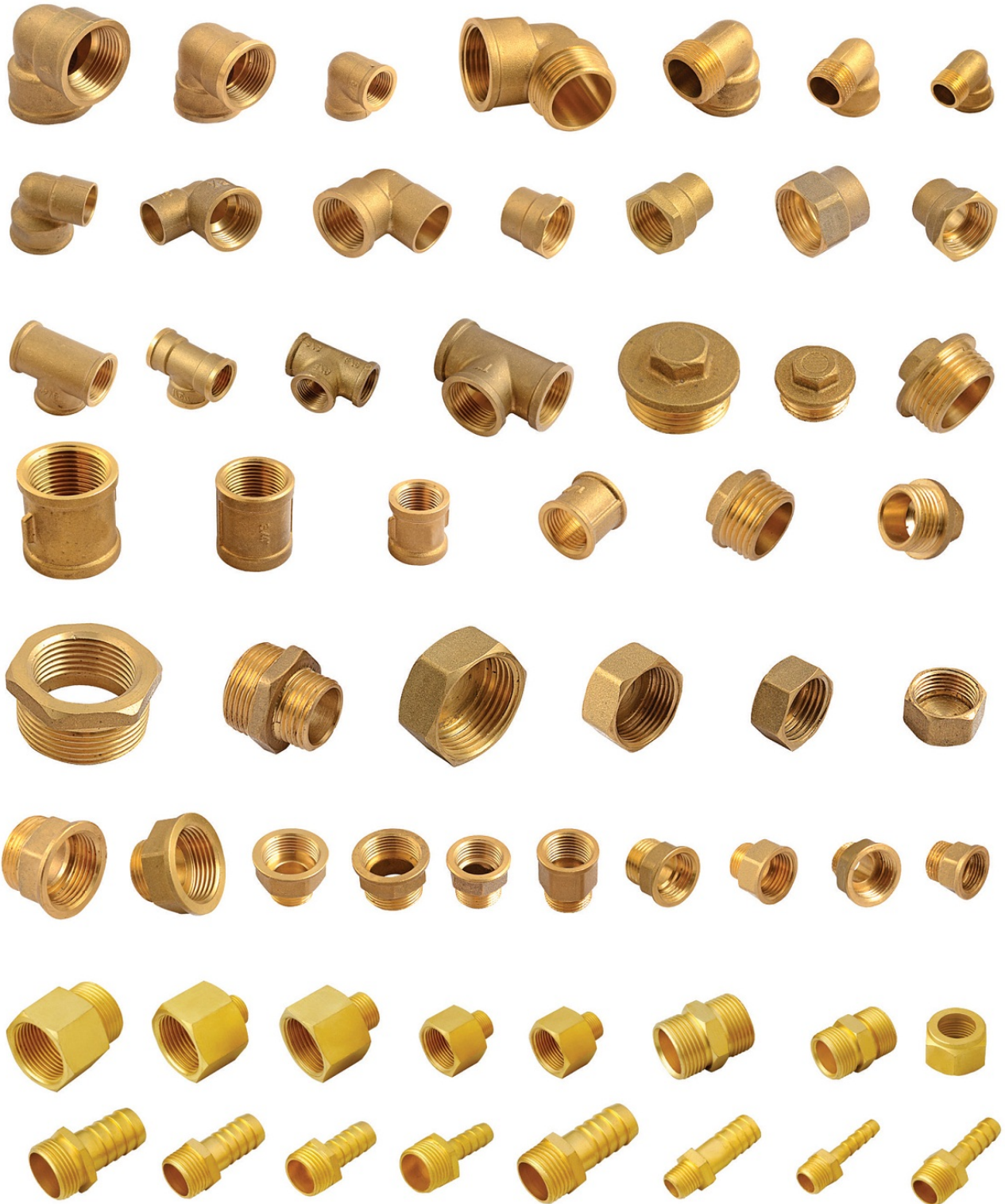


Email : parts@shree-extrusion.com • Email : brassbronzeparts@gmail.com
Web : www.shree-extrusions.com • Web : www.brassbronzeparts.com



SHREE EXTRUSIONS LIMITED

Pipe Fittings Parts





SHREE EXTRUSIONS LIMITED

Automobile Components





SHREE EXTRUSIONS LIMITED

Electrical & Electronics Componentes

Electronics Components



Electrical Plug Bushes



Electrical Plug Bushes



Electrical Toggles & Switch Parts





SHREE EXTRUSIONS LIMITED

Brass, Bronze Bushes & Components



Email : parts@shree-extrusion.com • Email : brassbronzeparts@gmail.com
Web : www.shree-extrusions.com • Web : www.brassbronzeparts.com



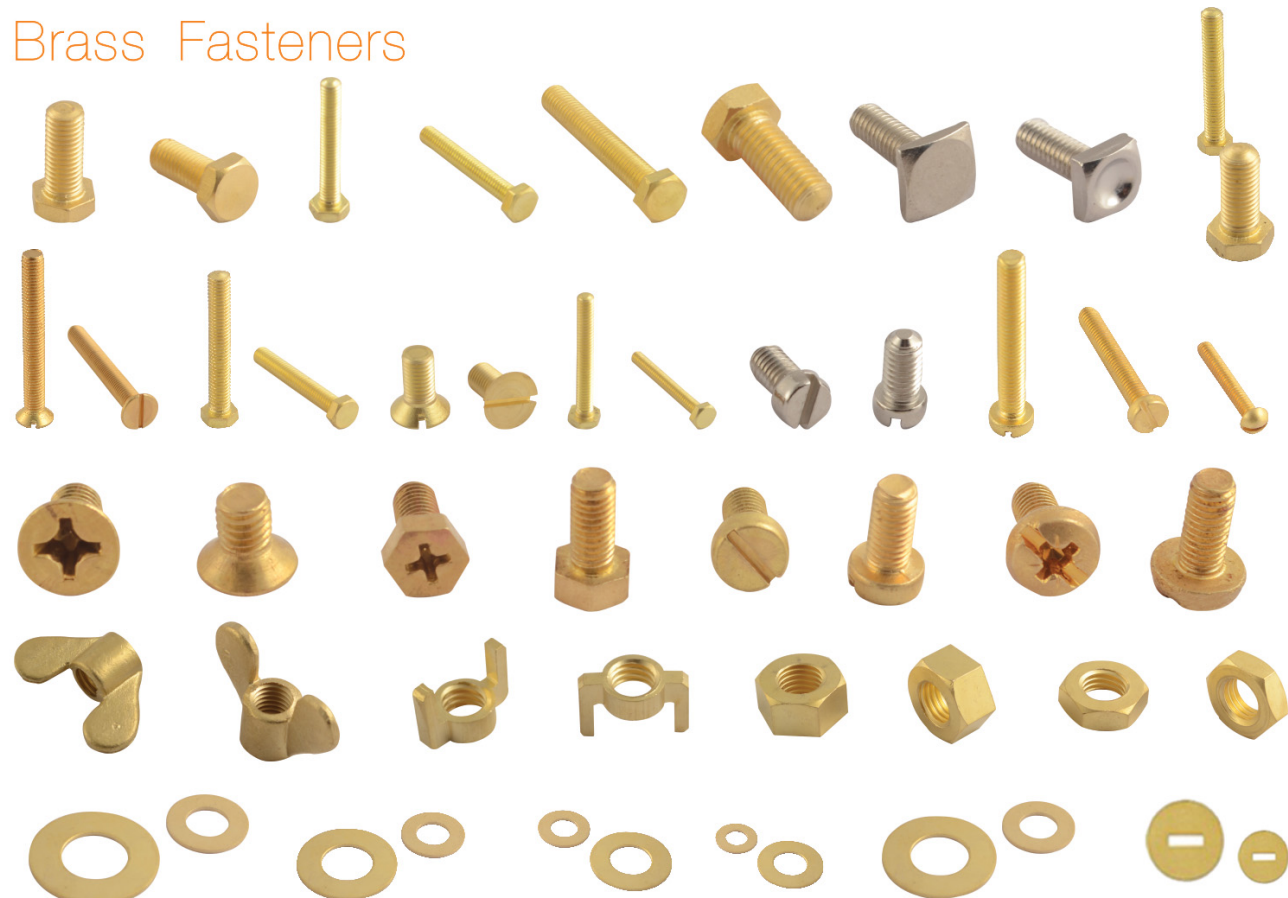
SHREE EXTRUSIONS LIMITED

Brass & Bronze Fasteners

Bronze Fasteners



Brass Fasteners



Special Purpose Small Turn Screws



Our Clientele : _____



Garden Reach Shipbuilders & Engineers Limited



Gun & Shell Factory ,Cossipore



Gun Carriage Factory, Jabalpur



Mazagon Dock Limited, Mumbai



Metal & Steel Factory, Kolkata



Indian Ordnance Factories , Kanti



Bharat Heavy Electrical Limited

Our Industry Partners : _____



Metal Alloys Corporation



SHREE EXTRUSIONS LIMITED

www.shree-extrusions.com
www.brassbronzeparts.com



SHREE EXTRUSIONS LIMITED

Quality, Technology & Vision at it's Best

WORLD CLASS SOURCING SOLUTIONS FOR BRASS & BRONZE COMPONENTS

Registered Office and Factory :

217/218, GIDC Phase-II, Okha Rajkot Road,
Dared, Jamnagar - 361 004 Gujarat (INDIA)
Phone : +91 288 2730118 / 7878527575
Fax : +91 288 2730583
Sales : +91 93281 05173 / 93281 05174
Manager : + 91 98980 67579

Corporate Office :

A/2, North View Appt., Sub Plot IV.
St. Xavier's College Road, Navrangpura,
Ahmedabad - 380 009. Gujarat (INDIA)
Ph. : + 91 79 26300054, 7878567575
CEO : + 91 98250 95960



Nearest Domestic Air Port :
Jamnagar - 3 Kms.
Nearest International Air Port :
Ahmedabad - 325 Kms.



Nearest Port:
Kandala - 222 Kms.
Mudra - 300 Kms.

FOR PARTS : Email : brassbronzeparts@gmail.com, parts@shree-extrusion.com

Web : www.brassbronzeparts.com

FOR EXTRUSION : Email : mail@shree-extrusion.com, sales@shree-extrusion.com

Web : www.shree-extrusions.com